



2 Port USB Output
雙USB接口輸出

Lighting:LED Torch
LED電量指示燈

QTP100 WIRELESS CHARGING PAD WITH POWER BANK

無線充電器+充電寶



Capacity容量: 5000mAh
Input輸入: DC 5V/2.1A
Output輸出: DC 5V/2.4A
Dimensions產品尺寸: 105 (L) X 105 (W) X 15.5 (H) mm





LET381 WIRELESS CHARGER VALET TRAY FOR OFFICE

多功能办公无线充电储物盒

Triple Coil
Wireless Charging
+Dual USB ports

Input输入: DC 12V/3A
Output无线输出: 5W max (5V/1A)
SUB Output输出: 5V/2.4A
Line length线长: 50CM





LET380
**WIRELESS CHARGER
VALET TRAY FOR HOME**

多功能家用無線充電儲物盒

Triple Coil
Wireless Charging
+Dual USB ports

Input輸入: DC 12V/3A
Output無線輸出: 5W max (5V/1A)
SUB Output輸出: 5V/2.4A
Line length線長: 50CM





QT5150
**SINGLE COIL
WIRELESS CHARGER**

單線圈無線充電器



Input輸入: DC 5V/2A
Output輸出: 5W max (5V/1A)
Line length線長: 80CM
Dimensions產品尺寸: 70 (L) X 70 (W) X 3.4 (H) mm





QT5152
**SINGLE COIL
WIRELESS CHARGER**

單線圈無線充電器



Input輸入: DC 5V/2A
Output輸出: 5W max (5V/1A)
Line length線長: 80CM
Dimensions產品尺寸: 160 (L) X 160 (W) X 3.5 (H) mm





LET211
SINGLE COIL
WIRELESS CHARGER

單線圈無線充電器



Input輸入: DC 5V/2A
Output輸出: 5W max (5V/1A)
Line length線長: 100CM
Dimensions產品尺寸: 60 (L) X60 (W) X11 (H) mm





LET350
**SINGLE COIL
WIRELESS CHARGER(FOR FUINITURE)**

辦公桌嵌入式無線充電器

Input輸入: DC 5V/2A
Output輸出: 5W max (5V/1A)
Dimensions產品尺寸: 80 (L) X 23 (W)





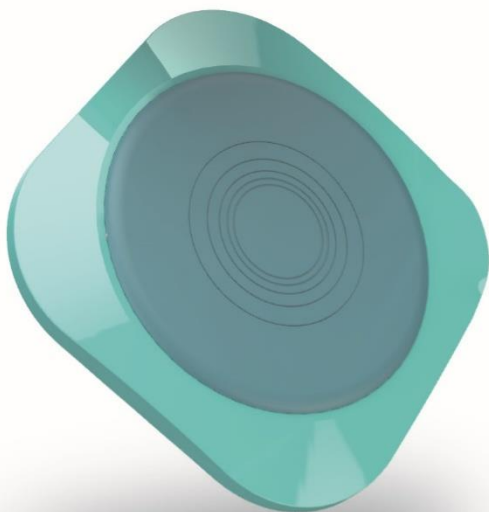


QTQ300
**SINGLE COIL
WIRELESS CHARGER**

單線圈無線充電器



Input输入: DC 5V/2A;9V/1.67A
Output输出: 10W max (5V/1A;9V/1.1A)
Line length线长: 100CM





LET330
TRIPLE COIL
WIRELESS CHARGING

三線圈無線充電器



Input輸入: DC 5V/2A
Output輸出: 5W max (DC 5V/1A)
Dimensions產品尺寸: 157 (L) X 82 (W) X 12 (H) mm



QTQ200
SINGLE COIL
WIRELESS CHARGER

單線圈無線充電器



Input輸入: DC 5V/2A;9V/1.67A
Output輸出: 10W max (5V/1A;9V/1.1A)
Line length線長: 100CM





LET120
**WIRELESS CAR
CHARGER**

车载无线充电器

Input输入: DC 12V/1.5A
Output输出: 10W max (5V/1A;9V/1.1A)
Line length线长: 180CM






QT1283
**WIRELESS CAR
QUICK CHARGER**
车载嵌入式无线充电器

Input输入: DC 5V/2A; 9V/1.67A
Output输出: 10W / 7.5W / 5W



 TX- 產品型號 Model
MET160

 輸入 Input
5V/2A, 12V/0.8A


 輸出 Output
5V/1A

 尺寸 Size
96*59*8mm

 三線圈模組




用於消費類產品集成


 特點 Feature
5V/12V通用，便於車載或
家用產品集成

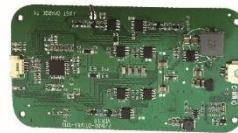
 TX- 產品型號 Model
QT1283

 輸入 Input
12V/1.5A

 輸出 Output
10W/7.5W/5W

 尺寸 Size
客戶自訂

 線圈 Coil
三線圈模組



 特點 Feature
用於車載&家用無線充電
產品集成

 TX- 產品型號 Model
MTQ180

 晶片方案 Chipset
自有Qquick-820

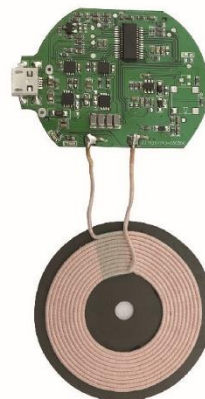
 輸入 Input
QC2.0

 輸出 Output
5W/10W

 線圈 Coil
單線圈模組

 尺寸 Size
Φ53*9mm

 特點 Feature
體積小，接口全，利於產品集成
無需散熱風扇，成本低



用於消費類產品集成